

Height Adjustable Desks

WORKSTATIONS - FURNITURE - SEATING - STORAGE - ACCESSORIES



TheOfficeGuys



phone 1300 798 807
web officeguys.com.au

ELECTRIC HEIGHT ADJUSTABLE DESKS

For many people a standard 730mm high desk height is not going to allow them to work comfortably and efficiently.

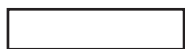
For people sharing workstations, with back issues or needing to change posture throughout the day, a height adjustable workstation will be a valuable work tool.



- Desk height 685 - 1205mm
- Maximum load 100kg
- Modesty panel for rigidity
- Stiffening rail for tops
- 31mm per second speed

COLOURS

TOPS



White



Beech

FRAME



White



Silver

RAPIDSPAN ELECTRIC

DESK



PRODUCT CODES

SE 127 1200 x 700

SE 157 1500 x 700

SE 187 1800 x 700

CORNER WORKSTATION



SE 15157 1500 x 1500 x 700

SE 18127 1800 x 1200 x 700

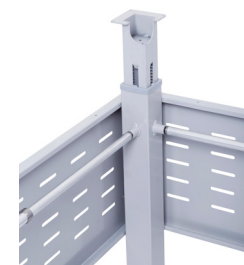
SE 18157 1800 x 1500 x 700

SE 18187 1800 x 1800 x 700

COMPONENTS



SS-SPLEG PS
Frame - Add modesty if required.



SSCP
Corner Pole



Electric Controller -
Simple up and down controller.

CALL NOW FOR A DEMONSTRATION



DESK BASED HEIGHT ADJUSTABLE WORKSTATIONS

Whilst many people are very aware of the benefits to health and productivity of being able to change position from sitting to standing whilst working, what is the solution if fixed height desks are already in place?

Desk based adjustable workstations sit on your existing desk allowing full sit / stand range.



- Large keyboard tray and work surface
- Gas spring for easy height adjustment
- Control levers on either side
- Height range 150 - 500mm

COLOURS



White



Black

RAPID RISER



PRODUCT CODES

RR1 SMALL

680 x 590 Worksurface
580 x 560 Base
15kg Weight Rating



RR2 MEDIUM

890 x 590 Worksurface
790 x 560 Base
18kg Weight Rating



MONITOR ARMS

ADD A MONITOR ARM AND KEEP YOUR RAPIDSPAN ELECTRIC DESK OR RAPID RISER WORKSPACE FREE.



SMARM
Single Monitor Arm

- Clamp or grommet fix to desk
- USB and audio (headphone and microphone) ports
- Fits 10" - 27" monitors
- VoIP compatible
- Available in white only



DMARM
Dual Monitor Arm



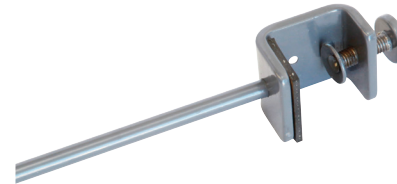
CALL NOW FOR A DEMONSTRATION

ACCESSORIES

Don't forget you still need a chair. We recommend a Full Ergo Mesh Chair giving you back and seat adjustment while sitting.

If you require privacy, a desk screen will attach to the span electric desk and go up and down with you.

For storage consider a mobile pedestal or caddy if you want more space.



DESK MOUNTED SCREEN

Clamp or screw fix to 1200, 1500 or 1800mm wide workstations.

Available in blue or grey.

CHAIRS



EM300



DAM MESH

The **EM300** offers full ergo adjustment at a mid price point.

For superior comfort look at the **DAM** mesh with big seat and back, ratchet back, seat slide and adjustable arms come standard.

Available in black only.



MOBILE PEDESTAL

Available in White, Black, Silver and Graphite.



CADDY

Available in White only.

Add a full width or slimline mobile, or where you need more storage use a caddy and add capacity.

Both are lockable and mobile.

ASK ABOUT THE FULL RAPIDLINE FURNITURE RANGE